

Ent Center for the Arts  
Dusty Loo Bon Viviant Theater  
Tech Packet  
Rev 4/6/2018

This document provides comprehensive technical information about the Ent Center for the Arts and the associated facilities. Any critical dimensions or inventory items must be checked on site, with the Production Manager, or with the appropriate technical personnel.

Any inquiries arising from or not answered by the information contained herein should be addressed to one of the following:

**Ent Center for the Arts Production Department**

5225 N. Nevada Ave.  
Colorado Springs, CO 80910  
719-255-3134

Don Fox  
Production Manager  
DFox2@UCCS.edu  
(509) 264-8872

Kristen Wickersheim  
Theatreworks Stage Manager  
KWicker2@UCCS.edu  
(719)255-8370

Melissa Baglio  
Master Electrician & Event Supervisor  
MBaglio@UCCS.edu  
(405)596-7153

Stephanie Bradley  
Costume Shop/Wardrobe Supervisor  
SBradley@UCCS.edu  
(719)255-3813

Jillian Taylor  
House Manager  
JTaylor13@UCCS.edu  
(719) 255 8365

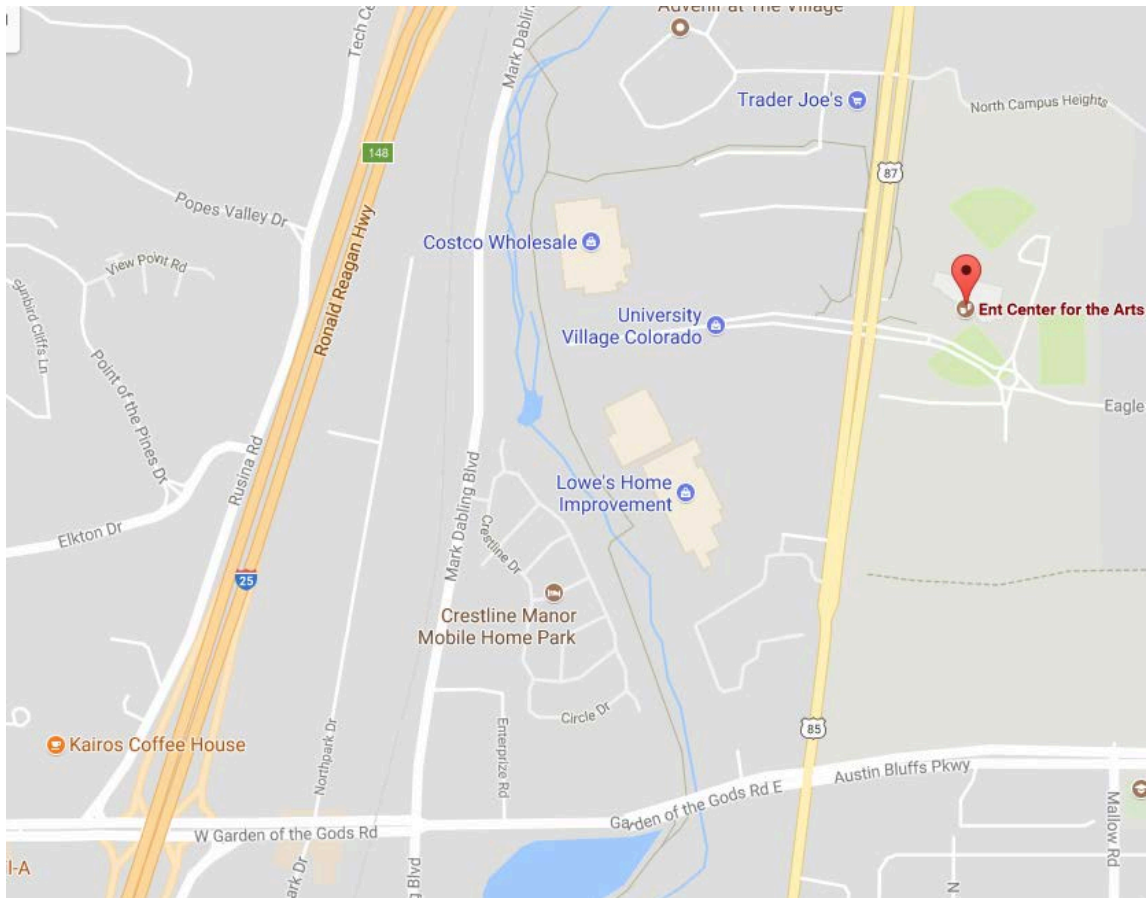
Seth Alison  
Theatreworks Master Electrician  
SAlison@UCCS.edu  
(303)902-8514

Dilon Cordray  
Box Office Manager  
DCordray@UCCS.edu  
(719)255-8365

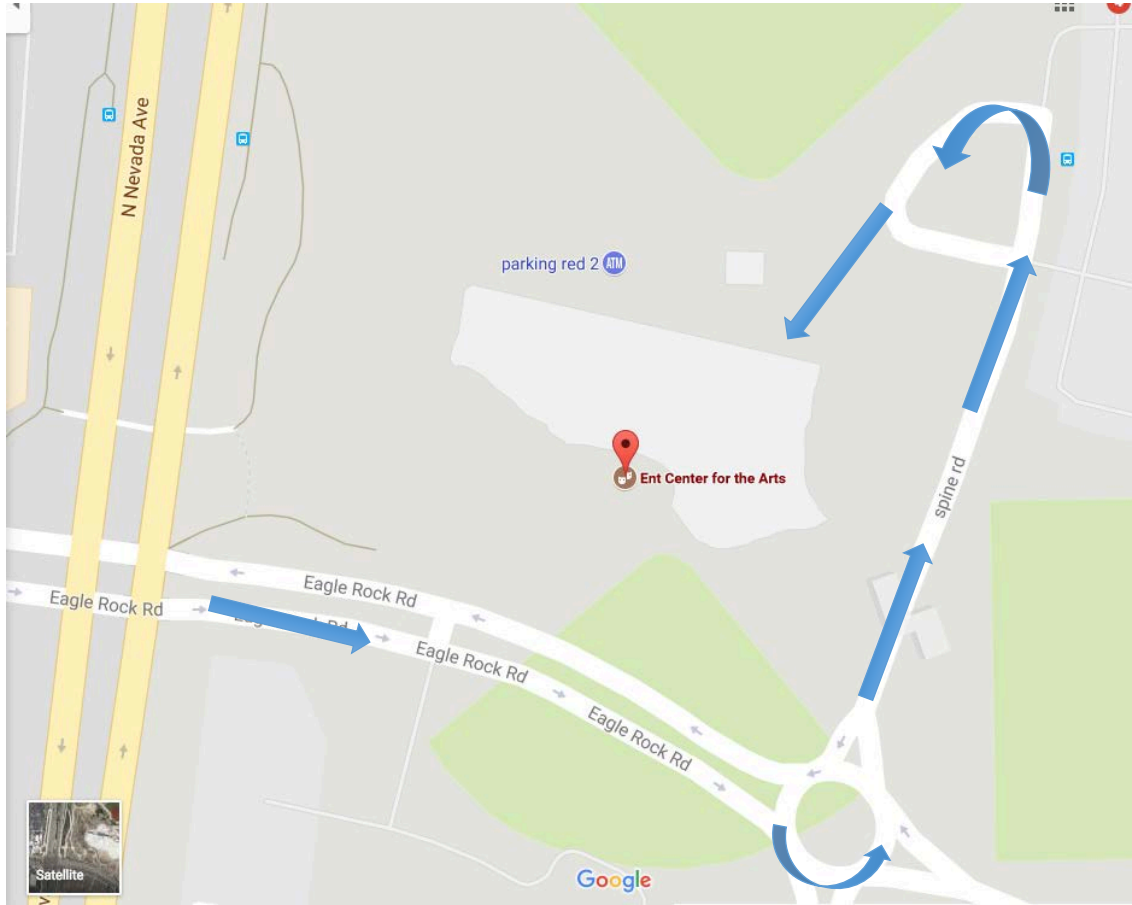
Ken Stark  
Theatreworks Technical Director  
KS945314@Gmail.com

Colorado Springs, Colorado Population: 465,101  
Elevation: 6,035 ft  
Denver: 70 miles (113km), Driving  
Time Zone: Mountain Standard Time (MST) ( -6 to GMT)

Ent Center for the Arts  
5225 N Nevada Ave.  
Colorado Springs, CO 80910  
(719)255-3134

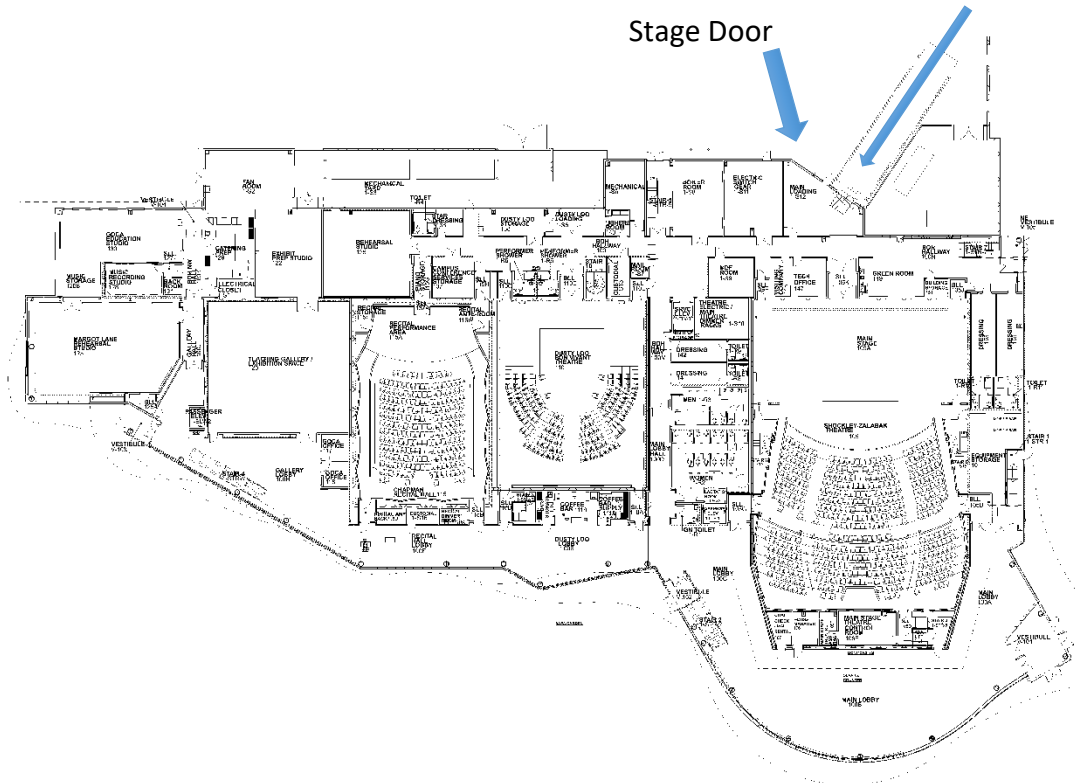


# Loading Dock:



Loading Dock is located at back side of building      Dock Ramp

Stage Door



## Ent Center Venue Descriptions:

*The Shockley-Zalabak Main Stage Theater is a 778 seat proscenium house which will serve a mix of in house produced events, as well as tours, rentals, and local community organizations. The largest venue in the Ent Center for the Arts, this proscenium stage theater is equipped with a hydraulic apron and seats up to 778 patrons (with the apron in the lowed position). With the apron raised the seating capacity is 742. Like all venues in the building, the Shockley-Zalabak is equipped with sustainable and flexible LED lighting technology. It is also outfitted with an automated fly system for scenery and lighting.*

*The Chapman Foundations Recital Hall is an intimate recital hall that seats up to 242 patrons. To ensure an exceptional auditory experience, the venue is acoustically isolated from the rest of the facility, with its own HVAC and electrical systems, and is designed to be one of the highest quality acoustic spaces in the region. The dynamic acoustics in the hall can be adjusted as needed.*

**The Dusty Loo Bon Vivant Theater\* is the home of THEATREWORKS. This venue is a black box theater with a partially trapped floor, designed to facilitate flexible performance configurations. The theater seats up to 300 patrons and is equipped with a rolling gantry to allow lighting and sets to be positioned without the use of ladders or fork lifts.**

*The Marie Walsh Sharpe Gallery of Contemporary Art\* is designed as a completely flexible and transformable museum-quality exhibition space, this 2,600 square foot white cube gallery is equipped with state-of-the-art humidity control and security. The gallery's retroplate flooring system, fully plywood-backed walls, grid of strong points at the ceiling and dedicated loading dock can accommodate art installations in nearly any configuration.*

*The VAPA Interdisciplinary Arts Lab\* is a multiuse, collaborative space for the interdisciplinary curriculum of the Department of Visual and Performing Arts programs (Art History, Film Studies, Music, Theatre & Dance, Visual Arts) and equipped with an array of technology and resources including multi-media technology, installation and sculpture capabilities, sound, green screen for film and more.*

*\* Note, these spaces have very limited availability for rental. Please inquire with the Production Manager.*

**The Osborne Theatre** is the main performance venue for full-scale collaborative Theatre productions. A flexible black box theatre with a professional control booth, the Osborne can be rearranged in multiple configurations and seat up to 120 people.

**The Dance and Movement Studio** is a rehearsal and performance space for collaborative projects with a dance focus. With ballet barres, state of the art sprung Marley floors, and unobstructed views of the Front Range, the studio is a jewel box venue dedicated to student work.

**The large music rehearsal hall** is a 2,000 square foot rehearsal room for many ensembles, recording, film scoring and other and collaborative uses.

**The recording studio & audio laboratory** is a state of the art facility and wired directly into the Rehearsal Hall, the Chapman Foundations Recital Hall, the Osborne Theatre and the Main Stage Concert Hall. This facility serves a broad array of functions within the VAPA Department including Audio Recording Engineering, Sound Design, Film Scoring and Multimedia Production.

### Accessible Facilities

Each space has accessible seating as well as partner seating available.

Shockley-Zalabak - 8 wheelchair-accessible spaces and 8 easy-access seats with swiveling armrests.

Dusty Loo - Min 2 accessible seats on stage level. Several more possible depending on current seating configuration – fully accessible balcony

Chapman Foundations Recital Hall - 2 accessible seats

Accessible toilets are located in the Lobby

A wireless assisted listening and audio description system is fitted to The Shockley-Zalabak Theater, Dusty Loo Bon Vivant Theater, and the Chapman Foundations Recital Hall.

### Emergency Numbers

ALL EMERGENCIES (Fire, Police, Ambulance & Coastguard) - dial 911

\*\*\*Remember to dial 9 for an outside line if within the Theatre. \*\*\*

Fire: Colorado Springs Fire Department - 719-385-5950

Police: University Police- 719-255-3111 OR police@uccs.edu

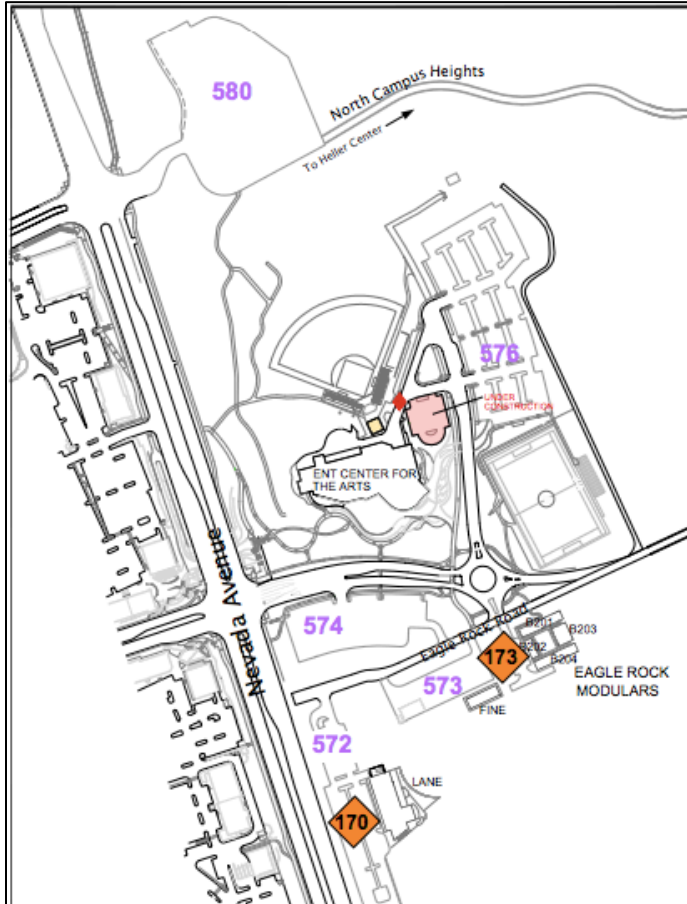
Colorado Springs Police Department - 719-444-7000 (Non-Emergency) or 911 (Emergency)

Hospital, Accident & Emergency: Call UCCS Public Safety ext. 3111 or 719-255-3111

### Parking

The parking lot adjacent to the Ent Center for the Arts, lot 576 & 574, are free. Additional free parking is available in Lot 580, directly north of the Ent Center (off North Campus Heights). It is a 10 minute walk from Lot 580.

Additional overflow parking may be available at University Center Village Shopping Center, which is directly west across Nevada Ave from the Ent center, and has a direct access pedestrian tunnel.



## **Loading**

Loading Docks are located on the north side of the building

The facility has a single-truck, Main loading dock area at dock level with a secondary loading door at street level midway down the back side of the building. Vehicles delivering to the theatre can be parked next to the dock doors. Only one (1) 53ft (~16m) semi truck can be parked here. If you arrive before the theatre staff you can ring University Security to gain access on (719)255-3288. Vehicles can only stay in this area while loading, or if permission is granted.

- Main loading dock has Electric garage door which is 8'0" wide X 12'0" high in size.
- Secondary loading dock has double doors with an opening 8'0" wide X 12'0" high in size

- The Loading Doors to the Shockley-Zalabak theatre are 10' wide x 12' tall
- Approx 40' push to the Sockley-Zalabak Theater stage from main loading dock
- Approx 135' push to the Shockley-Zalabak Theatre stage from the secondary loading dock

- The Loading Doors to the Dusty Loo stage are 8'w x 10' tall**
- Approx 145' push to the Dusty Loo stage from the main loading dock**
- Approx 45' push to the Dusty Loo stage from the secondary loading dock**

- The Loading Doors to the Chapman Recital Hall stage are 6' wide by 7' tall
- Approx 200' push to the Chapman Recital Hall stage from the main loading dock
- Approx 85' push to the Chapman Recital Hall stage from the secondary loading dock

## **Shore Power**

Hubbell CS6364C 50A twist lock female for Tour Bus or Truck needs at Main Loading Dock  
100A 3 phase 100A company switch is available inside the dock with an exterior cable pass through  
2 – 20A standard A/C Receptacles on the outside of the building

## **Production Office**

(1) Visiting Company Production Office - Assigned / Can Be Reserved  
(Can double as aux. dressing room)

## **Internet Accessibility**

WIFI available throughout building, via "UCCS-Guest" network.

## **Showers**

The facility has two (2) individual showers, which are ADA-compliant and located in the Dusty Loo backstage area.

## **Rehearsal Hall (Crow's Nest)**

Located on the First Floor at the end of the hall near the Recital Hall is the Rehearsal Space (Crow's Nest) which measures 32'-4" deep and 31'-6" wide with a height of 15'-0". It has a concrete floor with an elevated sprung floor. The Rehearsal Hall has a 3 phase, 200A Company Switch for auxiliary power needs. There are mirrors that cover the wall on the US side of the space. \* **MUST BE RENTED**\*

### **Wardrobe/ Laundry**

All Laundry, along with Wardrobe is located in the Costume Shop, which is on the second floor

2 top load washers

2 front load dryers

Steamers, Irons/Ironing Boards, and Rolling Costume racks limited availability and upon request

### **Green Room/Kitchen Area**

There is a shared Green Room/ Kitchen Area located near the Shockley-Zalabak backstage area, adjacent to the main Loading Dock. Performers and technicians for all spaces are encouraged to socialize in this space. The Green Room/Kitchen Area houses a full-size refrigerator, microwave, and coffee maker. This space is equipped with audio and video feed for each space that can be switched according to what programming is needed at that moment.

### **Ladders and Lifts**

1 Single-Person Genie Lift (Located in the Dusty Loo)

1 Driveable Genie Lift (Located in the Shockley-Zalabak)

Multiple ladders of various types and heights

1 Palate Jack can be made available with sufficient notice.

### **Chairs/ Music Stands/ Tables/etc.**

80 Wenger "Symphony" Orchestra Chairs on Chair Carts (15 Carts)

8 Cello Chairs

80 Manhasset Black music stands on Carts (6 Carts)

80 Music stand lights

1 Wenger Conductor stand with basket storage

2 Podiums

20 Sound Shields

6 - 2' x 8' folding tables

### **Pianos**

1 Steinway Concert D w/ piano bench (Piano Fee May Apply)

Other pianos available for rent as needed.

### **Ballet Barres**

4 Portable Ballet Barres (8' Long)

## **Portable Audio Equipment - (Site-wide Shared inventory)**

- Wired Microphones
  - o 2 AKG C414 X LII ST
  - o 3 Beyer M88-TG
  - o 4 Beyer M160
  - o 2 EV RE 20
  - o 4 Neumann KMS 105
  - o 2 Neumann SKM 184mt Stereo Pair (Matched) (4 total)
  - o 2 Neumann TLM 103mt Stereo Pair (Matched) (4 total)
  - o 2 Shure SM81
  - o 12 Shure SM57
  - o 12 Shure Beta58
  - o 6 Shure KSM32
  - o 2 Shure KSM 137
  - o 1 Shure Beta52
  - o 6 Sennheiser E604
  - o 8 Sennheiser MD421
  - o 8 Radial J48
  - o 2 Earthworks SR40
  - o 4 Shure Centaverse Overhead Cardioid Condenser (“choir”)
  - o 4 Audio Technica Pro 44 Cardioid Boundary (floor)
- Wireless Microphones/Elements
  - o 4 ULXD2/Beta58
  - o 8 Countryman E6
  - o 2 Shure 185 lavalier
- Loudspeakers
  - o 6 EAW MW10 Monitor Speakers
  - o 4 EAW JF8 FX Speakers
- DI's / Interfaces
  - o 8 Radial J48 Active DI Boxes
  - o 2 Whirlwind PCDI DI Boxes
- Microphone Stands
  - o 15 K&M 11” Mic Stand
  - o 15 K&M 21” Booms
  - o 20 K&M 17”-25” Mic Stand
  - o 20 K&M 35”-63” Mic Stand
- Snake
  - o 3 Whirlwind 12 Channel/0 Return Sub-Snake
- Portable PA System
  - o 1 Behringer X32 Compact Digital Mixer
  - o 1 Behringer SD8 Channel Digital Stage Box
  - o 6 Electro-Voice ZLX 15P Powered Speakers
  - o 6 Speaker Stands



## Dusty Loo Bon Vivant Theater

### General Information

#### Theatre Dimensions

Stage Width: 54'-0"

Stage Depth: 67'-0"

Height from Stage to Grid: 27'-9"

Access to load in through Elephant Doors USC. ( 8'-0" W x 10'-0" H)

#### Grid (See plan details on subsequent pages)

Grid is comprised of 1-1/2" Schedule 40 Pipe at 27'9" Z from stage deck

Main grid is comprised of 2 sections off of center stage 3x14 square grid with each grid square measuring 4'x4'

Stage left and stage right 1x14 grid with pipe spaced at 4'x2'2"

Main Center line pipe not attached to the 2 main grid sections

Unistrut balcony rail on all 3 sides

Access to grid is reached by two traveling gantry units that move from DS – US

Stage left, stage right, and balcony rail areas may be accessed directly from the catwalk

#### Stage Floor

Sprung w/ Black Painted Masonite finish

#### Road Case Storage

Limited space available-- Truck Storage Suggested

#### Trap Room

Trap Room is 12' below stage level.

Area that is trapped is 18'-0" D x 24'-0" W

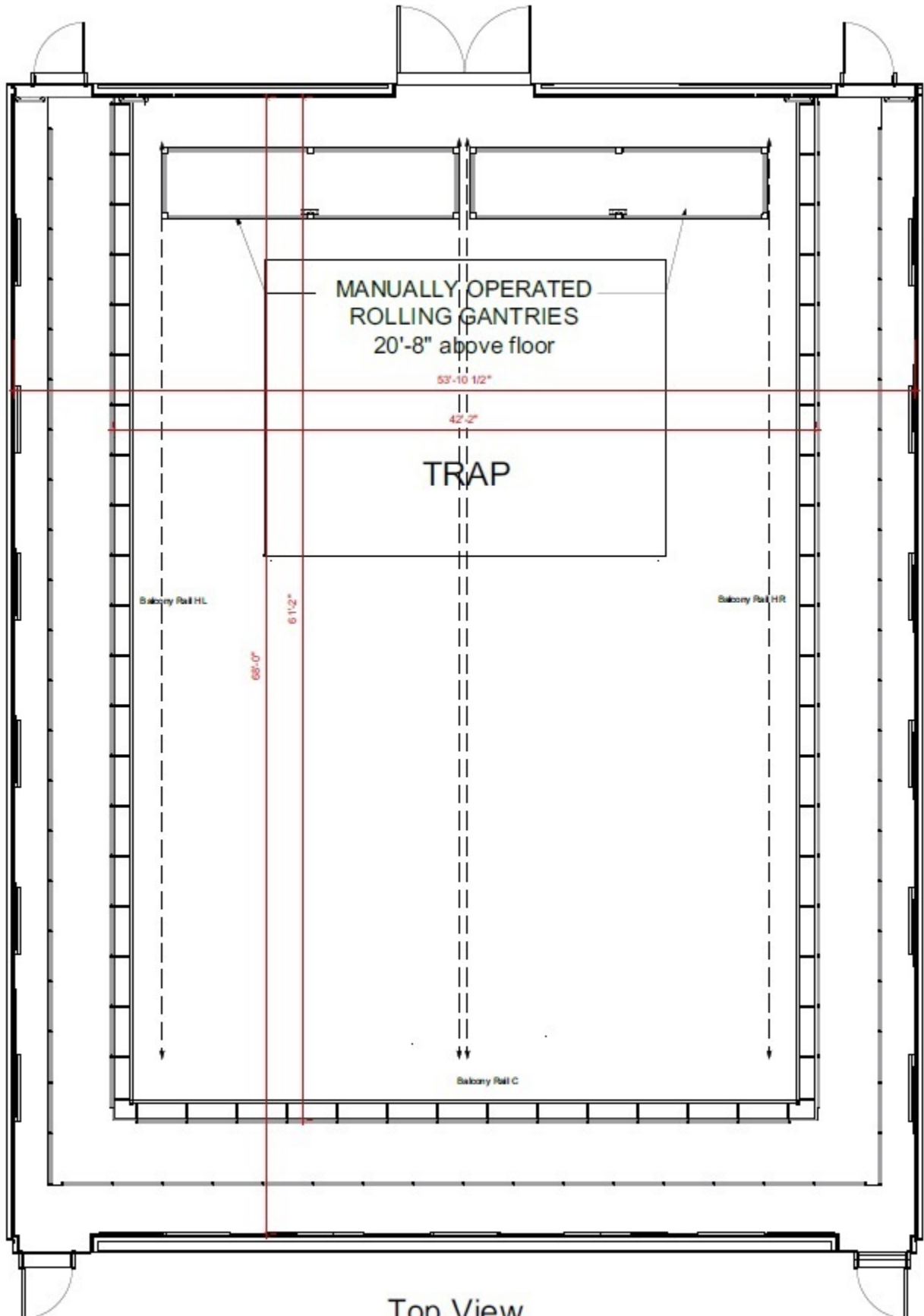
Trap Lids are 3'x 8' (18 lids total)

I-Beam and Column structure is completely removable

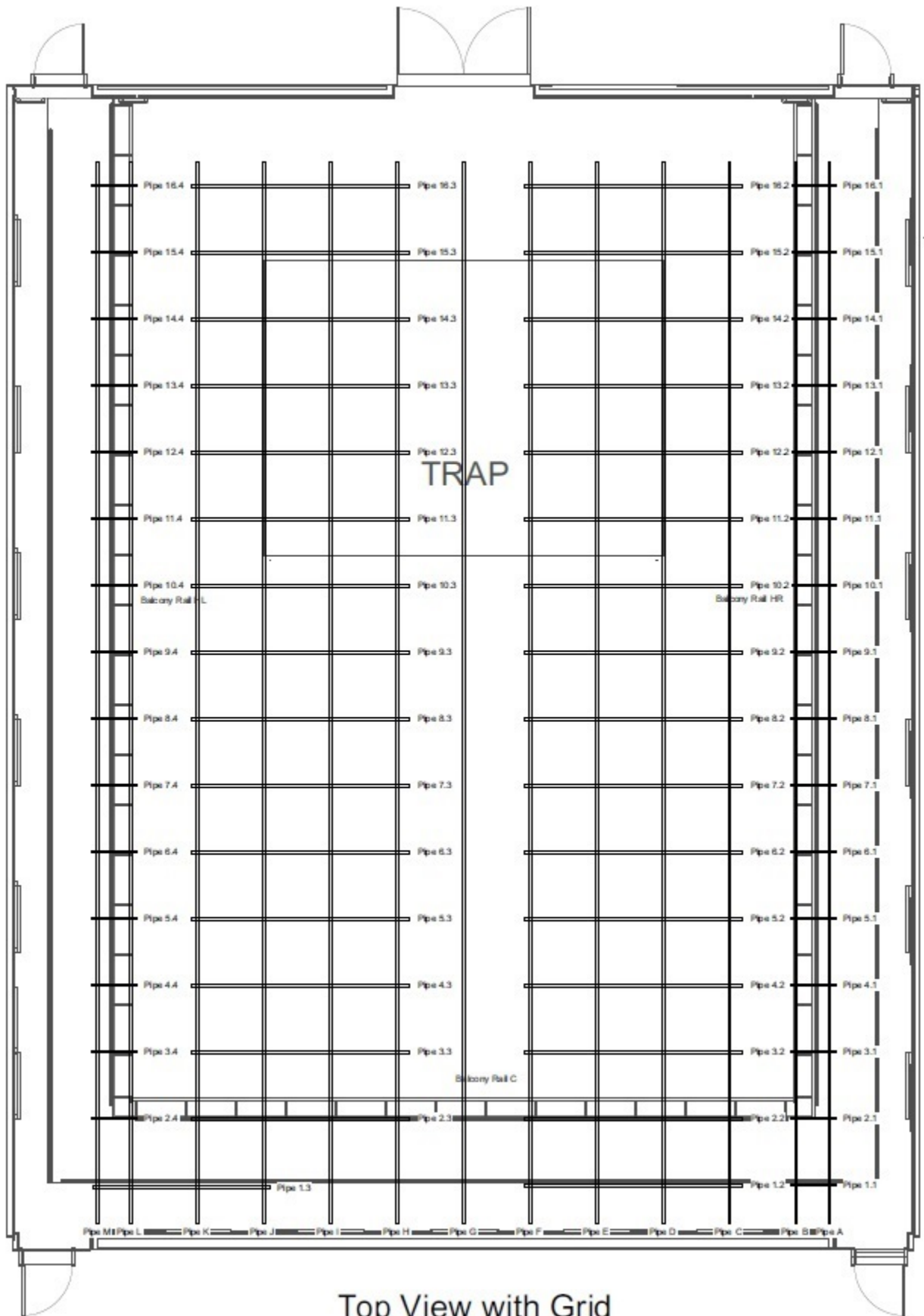
Trap is equipped with 60A, 3 Phase Company Switch for additional power needs

Trap room can be accessed by either circular stairs, or freight elevator

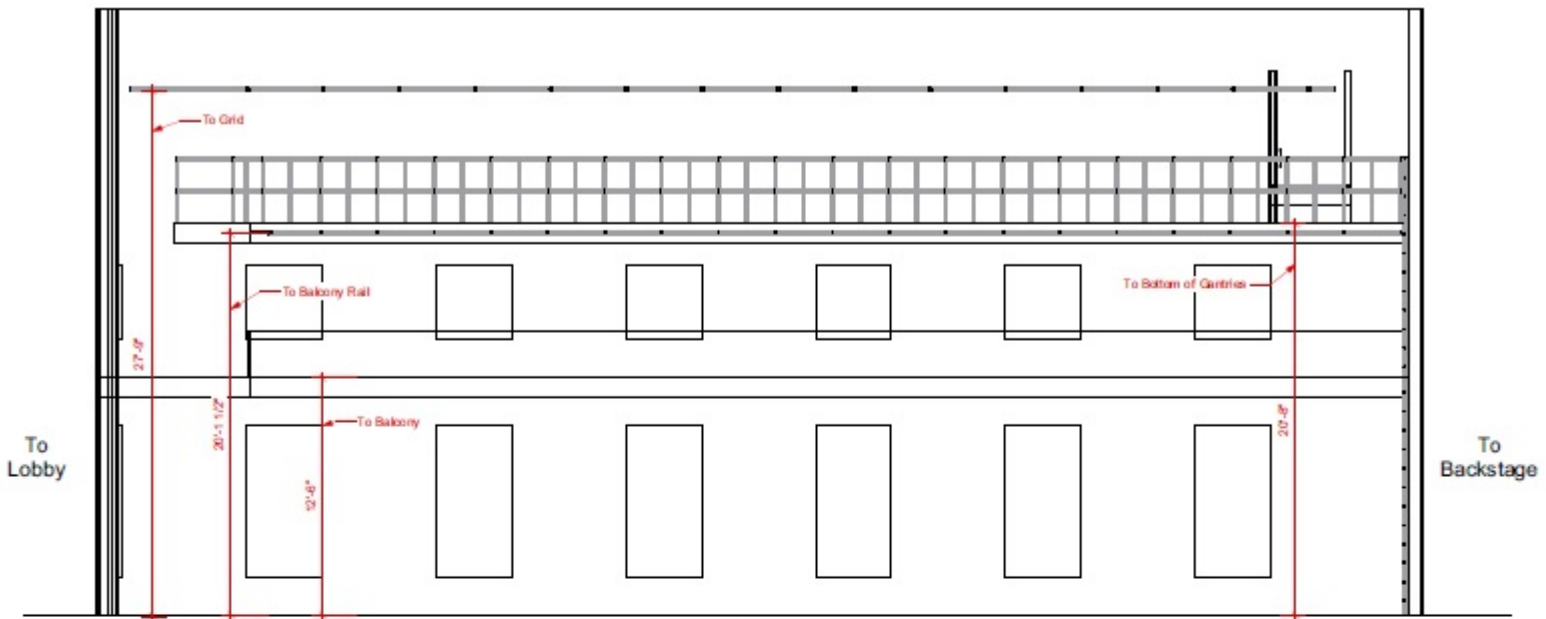
Creative Connors Stage Pocket Lift - (Requires involvement of the Technical Director of Production – Labor and Design Fees May Apply)



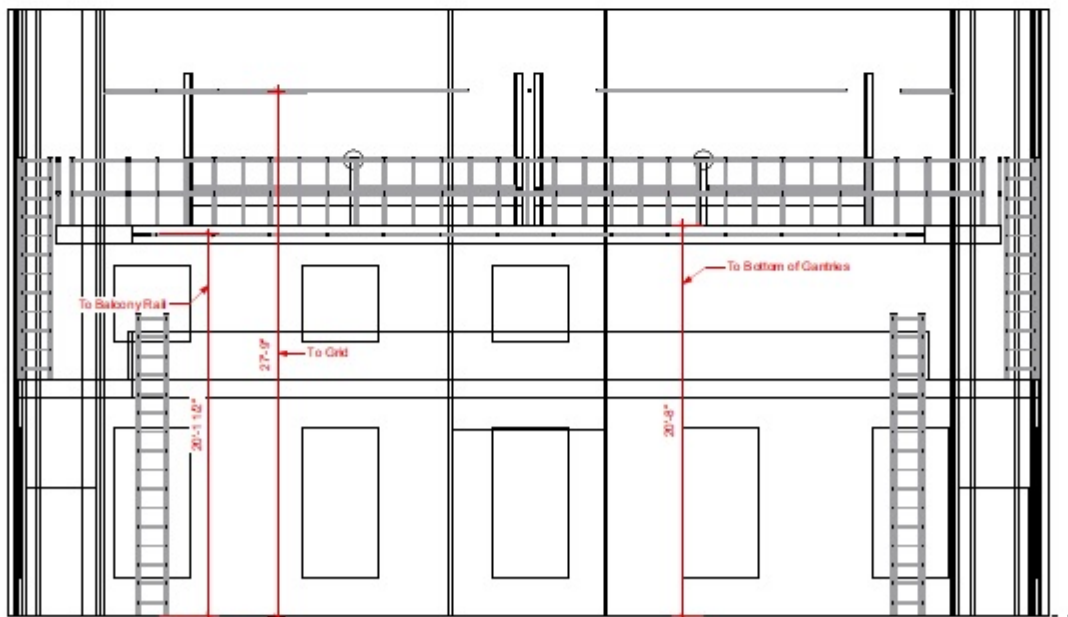
Top View



Top View with Grid



SIDE VIEW



FRONT VIEW

## Lighting System

### General Information

All Fixtures Stage Pin

### Power

(2) Sensor 3 - 48 Module Dimmer Racks providing 192 circuits at 2400w each  
Each rack has 48 Dual 20A configurable ThruPower Modules for dimmable or constant true A/C power to any circuit  
3 Company Switches available for additional power tie-in on stage  
3 Phase 60A, 100A, and 200A all locates stage right

### Lighting Console

ETC ION 6000 with 6144 Outputs/Parameters to Include:  
10000 Control Channels, 10,000 Cues  
Black Universal 2x10 Fader Wing:  
20 - Faders with 2 buttons each  
(2) LCD Monitors  
CyberPower Stand Alone UPS 1200VA W/AVR

### Followspots

No follow spots

(Note; two 5-degree Source Fours with irises can be used as follow spots as needed. Rental fee will apply)

## Lighting Inventory

	<b>Conventionals</b>	
40	ETC Source 4 jr. Zoom 25-50	575 w/Size "M" patterns
5	ETC Source 4 Body	575w will not accept 750w lamps
5	Source Four Lens tube - 26 Degree	
3	Source Four Lens tube - 36 Degree	
3	Source Four Lens tube - 50 Degree	
6	19 Degree Ellipsoidal	750 Watt
24	26 Degree Ellipsoidal	750 Watt
24	36 Degree Ellipsoidal	750 Watt
6	50 Degree Ellipsoidal	750 Watt
2	15-30 Degree Zoom	750 Watt
28	Source-Four Par	750 Watt
16	ETC Source 4 par 575w	575 Watt
	Source Four Pars have complete Lens sets of WFL, MFL, NSP, and VNSP	
13	Source Four Par XWFL Lenses	
31	Altman 6" Fresnel	500w
3	Altman 3" Fresnel (inkie)	150w
6	Altman Zip Strip	750w/ 3 circuit version
15	Altman Economy Cyc (single cell unit)	1000w/12 w/yokes, 3 w/o
3	Altman Mini 10 (Q-lite) w/ barn doors	1000w
10	2.75" frame Mini-par - Birdie	
4	GAM Stick up	200w
	<b>LED, Intelligents, and FX</b>	
8	200W Spectra-Cyc 22 200 LED cyc lights	
6	Chauvet Rogue R2 Wash LED fixtures	
6	High End Systems SolaFrame 750	
1	Haze Base base*cap fog machine	
3	Auto Yoke w/ Source 4 - Can use Scrollers	750w 16 bit
1	Roscoe I-cue (Can Not use Scrollers)	
1	Martin Atomic3000 DMX strobe	
1	Martin ZR24/7 DMX controllable Hazer	
1	LeMaitre G300 MK-I Fog Machine (Non DMX)	50' of cable for remote

## Audio System

### Show Control

Mac Book Pro w/ QLab 4  
Tascam SS-CDR200 CD Recorder

### Audio Consoles

Midas 32 Digital Console (Primary console)  
Behringer X32 digital console  
Behringer Eurodesk MX3282A Analog Console

### Sound Reinforcement

Main/FX Speakers:  
4 - EAW JF60Z  
Main Speakers:  
4 - EAW JF29  
FX Speakers:  
4 - Renkus CFX 41  
Subwoofer Speakers:  
2 - QSC KW181 Sub  
Miscellaneous Speakers:  
4 - JBL AS2222-STD 2x12" 2-Way Speaker  
2 - JBL Control SB210 subs  
4 - JBL Control 30  
2 - Squire by Fender monitor wedges

### Amplifiers (Installed)

Monitor/FX Amp:  
4 - Crown CDI 2000

### Amplifiers (Not Installed)

4 - JBL Power amplifier (2 channel) Model SR6615  
4 - JBL Power amplifier (2 channel) Model 6260  
1 - Crown Power Amplifier (8 channel) Model CTs 8200  
1 - JBL Power amplifier (2 channel) Model 6230

### Wireless Microphone Transmitters/Receivers

3 - Shure PG58 Wireless Handheld  
2 - Shure LX1493-CV (LX-2) Wireless Lav with Beltpack  
1 - Telex FMR-450 Wireless Lav with Beltpack  
8 channels of Shure ULXD Wireless portable (Shared Inventory)  
Mix of lav and countrymen Wireless elements (Shared Inventory)

\*\*\*\* For shared equipment, please refer to Portable Sound Equipment \*\*\*\*

### Microphones

2 - Crown PCC 200 Boundary (floor) mics  
1 - MXL FR-400M Boundary (floor) mic

\*\*\*\* For shared equipment, please refer to Portable Sound Equipment \*\*\*\*

## Clear-Com

Clear Com RM-704 4 Channel ICOM Remote Station  
8 Clear Com Belt packs and Headsets

### Com Port Locations:

West Wall North  
West Wall Mid  
West Wall South  
North Wall West  
North Wall East  
East Wall North  
East Wall Mid  
East Wall South  
South Wall  
Gallery West  
Gallery East  
Trap Pit  
West Catwalk South  
West Catwalk North  
East Catwalk North  
East Catwalk South  
Tech Table  
House Mix Position  
Booth Mix Position  
Truck Dock  
Control Booth  
Stage Manager

## Additional Equipment

Listen LT-800 ALS Transmitter

## Additional Equipment (not installed)

Stage Master 8 channel 25' snake  
Jade Audio 24 channel 100' Snake  
Behringer Ultra DI DS100  
2 - ETA PD11LV Rack illuminator / power distro  
2 - Behringer Ultragraph Pro GEQ3102 stereo Equalizer  
1 - Nady GEQ 215 Stereo Equalizer  
1 - Behringer DSP2024P 24 bit AD/DA Converter  
2 - JBL M552 Stereo/Mono Variable Crossover  
1 - Yamaha GC2020B II Compressor / Limiter

## Microphone / Music stands

2 – Boom microphone stands  
1 – Round base microphone stand  
5 – Music stands

\*\*\*\* For additional shared equipment, please refer to Portable Sound Equipment \*\*\*\*

## Video

1 - Black and White Stage Manager's Camera: Ikegami ICD-49  
1 - Black Magic Smart Duo monitors (part of Stage Manager portable rack)  
2 - Sony SX GA+ VPL-FE40 projectors with VPLL-1008 Lenses installed (standard lenses available)  
1 – 9' x 12' Front projection video screen (No frame kit)



## Seating

Fully Re-configurable Black box Seating (Labor fees may apply)

Up to 300 seats

Minimum of 2 Accessible Seats – several more depending on seating configuration

Fully accessible balcony

## Dressing Rooms

(Total of 5 dressing rooms in the facility divided amongst 3 performance spaces)

### ***Dusty Loo has two (2) allocated dressing rooms***

Each dressing room can accommodate up to 9 performers

Private bathroom for each Dressing Room

These two dressing rooms are equipped with

Makeup Mirrors and Lights for each space

Costume racks

Quick Change Booths created as needed

## Soft Goods

6 pieces - Black, sewn flat (0 fullness), 10' wide by 8' tall border sections. Grommets on a reinforcement webbing along the top edge, no chain, with pipe pocket at bottom.

8 pieces: Black, sewn flat (0 fullness), 10' wide by 23' tall leg sections. Grommets on a reinforcement webbing along the top edge, no chain, with pipe pocket at the bottom with the following modification: pipe pocket at the bottom is 8 inches, with the lower 3 inches sewn shut with grommets inserted on 12" centers to match the grommets at the top edge so that the good can be folded up to be 11'6" tall.

Several sizes of old stock soft goods in varying conditions are available

## Folding Tables

2 – 18" x 5'

1 – 20" x 4'

2 – 24" x 4'

1 – 18" x 8'

3 – 18" x 6'

4 – 30" x 6'

3 – 30" x 5'

## **Chapman Foundations Recital Hall**

### **General Information**

#### Theatre Dimensions

Stage Width US: 35'-0"  
Stage Width DS: 43'-0"  
Stage Depth: 20'-0"  
Height from Stage to Grid: 27'-9"

#### Stage Floor

Sprung w/ White Oak Finish

#### Road Case Storage

Limited space available – storage on truck recommended

### **Lighting System**

#### General Information

All Fixtures Stage Pin

#### Lighting Console

ETC Element 40 Console with 1024 Outputs/Parameters to Include:  
500 Control Channels, 10,000 Cues  
(2) 23" LCD Touch Screen Monitors  
Paradigm Preset Lighting Controller

#### Lighting Inventory

8 - 19° Source Four LED Ellipsoidal Series 2 Lustr - Black Body  
4 - 26° Source Four LED Ellipsoidal Series 2 Lustr - Black Body  
24 - D40 Lustr+ LED Pars  
1 - Altman Ghost Light

### **Power**

1 – 60A, 3-phase Company Switch located Stage Left in SM room

### **Audio System**

#### General Information

FOH Variable Acoustic System

#### Show Control

Mac Book Pro w/ QLab 4

#### Audio Recording

Tascam SS-CDR200 CD Recorder

#### Audio Console

Yamaha CL3 Digital Console

### FOH Sound Reinforcement

#### Main Speakers

- 2 - D&B Yi7P
- 2 - D&B Yi10P
- 1 - D&B 30D

#### Front Fill Speakers

- 5 - D&B 5
- 1 - D&B 10D

#### Subwoofer Speakers:

- 2 - D&B Yi Sub
- 1 - D&B 30D

### Stage Monitors/FX Amplifiers

- 4 - Renkus CFX 41
- 4 - Crown CDI 2000 Amplifiers

### Wireless Receivers

- 12 channels of Shure ULXD Wireless
- 4-channels installed in CFRH
- 8-channels portable (Shared Inventory)

### Wireless Transmitters

- 2 - Shure ULXD1 Body Pack Transmitter
- 2 - Shure ULXD2/B58 Handheld Transmitter
- Mix of lav and countrymen Wireless elements (Shared Inventory)

\*\*\*\* For shared equipment, please refer to Portable Audio Equipment \*\*\*\*

### Clear Com

- Clear Com RM-702 2 Channel ICOM Remote Station
- 4 Clear Com Belt packs and Headsets
- Com Locations
  - Downstage Right
  - Downstage Left
  - Upstage Left
  - Upstage Right
  - Booth Mix

### Microphones

\*\*\*\* For shared equipment, please refer to Portable Audio Equipment \*\*\*\*

### Video and Projection

- Projector:
  - DPI Titan Quad 2000 WUXGA
- Projection Screen:
  - 1 - Da-Lite Tab-Tension Screen

### Presentation System

- Crestron DMPS 4k-300

### Seating

Fixed Continental Seating

Up to 242 seats

6 wheelchair spaces

### Dressing Rooms

(Total of 5 dressing rooms in the facility divided amongst 3 performance spaces)

#### ***Recital Hall has one (1) allocated dressing room***

The dressing room can accommodate up to 2 performers

Private bathroom for the Dressing Room

This dressing room is equipped with

Makeup Mirrors and Lights for each space

Costume rack